

# CBCN . RCCS

Canadian Breast Cancer Network  
Réseau canadien du cancer du sein

## Breast Cancer in Canada

**Metastatic breast cancer** refers to cancer that has spread from the breast to different parts of the body, most commonly the bones, liver, lungs and brain

**Breast cancer** is expensive for Canadians even with public health care

**A.** Following a **breast cancer** diagnosis, a family can lose an average of **\$12,000** in **annual income**

**B.** A cancer patient with private health insurance can still spend **17%** of an average family's **income** on prescription **cancer drugs**

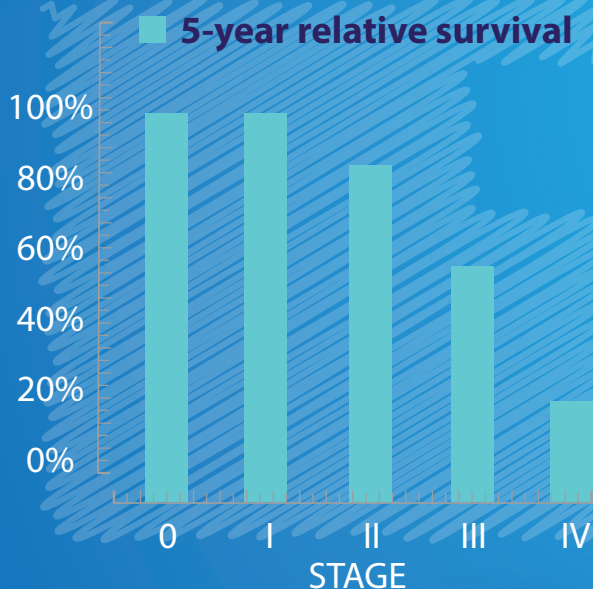
**Breast Cancer can result in Unforeseen Expenses:**

**A. DRUGS**

**B. Prosthetics**

**C. Travel costs**

**D. Child care**



**10%** of women diagnosed with **breast cancer** will have an initial diagnosis of **metastatic breast cancer**

**30%** of women diagnosed initially with earlier stages of **breast cancer** will go on to develop

**metastatic breast cancer**

**55%** of Canadian women with **metastatic breast cancer** agree that the information & support available does **not meet their needs**

**Learn more  
and get  
Involved!**  
visit **WWW.cbcn.ca**

### References

<http://www.cbcn.ca/index.php?pageaction=content.page&id=2912&lang=en>

[http://www.colorectal-cancer.ca/IMG/pdf/cancer\\_drug\\_access\\_report\\_en.pdf](http://www.colorectal-cancer.ca/IMG/pdf/cancer_drug_access_report_en.pdf)

<http://www.cancer.ca/en/cancer-information/cancer-type/breast/prognosis-and-survival/survival-statistics/?region=nu>

[http://cbcncanada.ca/documents/cbcncanada\\_special\\_reports/MBCIC-Report.pdf](http://cbcncanada.ca/documents/cbcncanada_special_reports/MBCIC-Report.pdf)

<http://theoncologist.alphamedpress.org/content/9/6/617.full>

[http://theoncologist.alphamedpress.org/content/10/suppl\\_3/20.long](http://theoncologist.alphamedpress.org/content/10/suppl_3/20.long)

<http://www.advancedbreastcancercommunity.org/countus/2013-global-survey.html?country=canada>